

A circular logo with a teal background. The text "Lewisham" is in a bold, black, sans-serif font, and "music" is in a smaller, white, sans-serif font below it.

Lewisham
music

2024-2025

Programme for schools

Lewisham Music is an award-winning charity on a mission to inspire and empower young people across our community through a diverse programme of learning and music-making.

Contents

Click a page number/title to head straight to the page

- 
- | | | | |
|-----------|---|-----------|---|
| 01 | A message from Lewisham Music | 13 | Workshops |
| 03 | How to book a programme/universal offer | 14 | Specialist advice, consultation/music audits, CPD provision and lesson observations |
| 04 | Curriculum Lessons for Primary Schools | 16 | Other opportunities in schools and in the community |
| 06 | Whole Class Ensemble Tuition (WCET) | 19 | Summary of charges |
| 08 | Individual and small group lessons | 21 | Charges/general notes |
| 10 | Ensemble/choirs/group music-making | 22 | Why use Lewisham Music |
| 11 | Rap and lyricism, and songwriting | 23 | Equity and inclusion |
| 12 | Music Technology/Production | 24 | Useful website links and our contact details |

A close-up photograph of a young woman with dark hair pulled back, wearing a blue hoodie and a white and green striped shirt. She is focused on playing a silver flute. The background is dark with some blurred lights. The text 'A message from Lewisham Music...' is overlaid on the left side of the image in a large, white, sans-serif font.

**A message
from Lewisham
Music...**

Dear Lewisham schools/academies.

We are delighted to present our school offer for the 2024–2025 academic year. This includes our familiar, long-standing programmes like Whole Class Ensemble Teaching ([see page 6](#)), as well as a more recent offers such as classroom music curriculum provision ([see page 4](#)); and music technology/production ([see page 12](#)). I hope that this is of interest. You can book programmes on the [schools music offer page](#) of our website. If you have any queries, please email: schoolprogrammes@lewishammusic.org.

We have again been busy visiting schools to discuss your musician provision and what we can do to help. These supportive visits are offered on an ongoing basis, so please do get in touch if this is of interest. We are also offering free schools visits from Clare Caddick, Vocal Leader, which will focus on supporting your staff with singing. It's been wonderful to welcome school colleagues to our CPD sessions, and to host schools from across the borough at our Turning of the Year, SongFest and Live Unplugged events which showcase the diverse and rich musical lives of Lewisham schools.

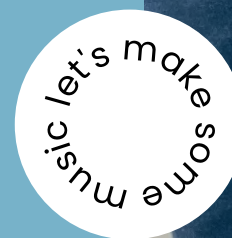
Page 16 outlines all the great progression opportunities we can offer your young musicians outside of school, including holiday programmes like Lewisham [Junior Orchestra](#) and weekly activities like [Lewisham Vocal Collective](#). We have also

been running programmes which use music to celebrate the history and people of different areas, such as our [Bellingham centenary project](#).

2023–2024 was the first year that the new National Plan for Music Education (*The power of music to change lives*) came into effect. Part of this includes the plan for bigger regional music education Hubs. This means that Lewisham Music will still exist as an independent charity, but we will work as part of a wider strategic group of organisations across Bexley, Bromley, Greenwich, Lambeth, Lewisham and Southwark. Our overall purpose remains the same – as the lead partner in your local Music Hub, Lewisham Music has a remit from the Department for Education to support and enhance school music; train and connect teachers and other music professionals; provide a diverse range of opportunities to young musicians in the community; and work in partnership with other organisations to maximise opportunities and progression routes.

Thank you for your time. We look forward to working with you to give Lewisham's young musicians the musical experiences they deserve.

Charly Richardson – Chief Executive
Sarah Plummer – Schools Music Leader



Our universal offer

All schools and academies have regular access to...

- information about music projects and events led by Lewisham Music and Hub partners
- regular music teacher network meetings
- borough performances such as Lewisham Live and Turning of the Year
- music training for tutors, music leaders, music curriculum teachers and class teachers
- advisory meetings with a Lewisham Music senior manager
- opportunities for pupils to join after school ensembles, Saturday Music Centre and holiday courses (charges apply for parents and carers)
- special projects with partner organisations
- Lewisham Music's monthly Creative Roundup

How to book

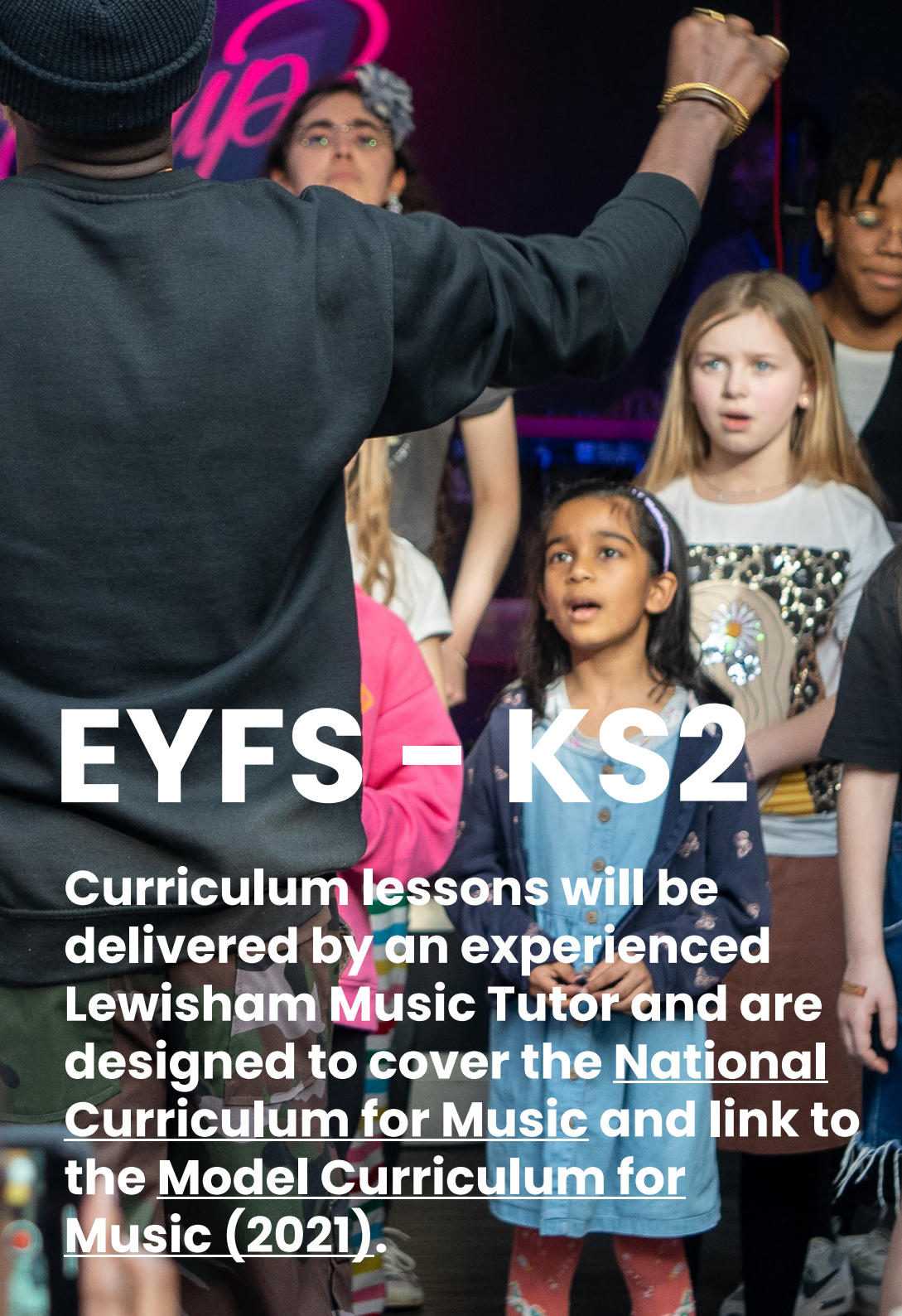
If you'd like to book a programme, please click the link below and complete our short online booking form, a member of the team will then be in touch to discuss your requirements. If you have any queries please contact schoolprogrammes@lewishammusic.org

www.lewishammusic.org/schools-music

click me
please

new new
new new

Curriculum Lessons for Primary Schools



EYFS – KS2

Curriculum lessons will be delivered by an experienced Lewisham Music Tutor and are designed to cover the National Curriculum for Music and link to the Model Curriculum for Music (2021).

The course of lessons will cover the areas of Singing, Listening, Composing and Performing, and are designed to be delivered weekly.

Duration

This programme can be booked and timetabled to suit the school day and it is recommended that lessons last between 45mins – 60mins. There is a minimum booking requirement of 2 hours.

Cost

£51.75 per hour (please note that this includes 10% planning and preparation time for the Music Tutor)

Size of group

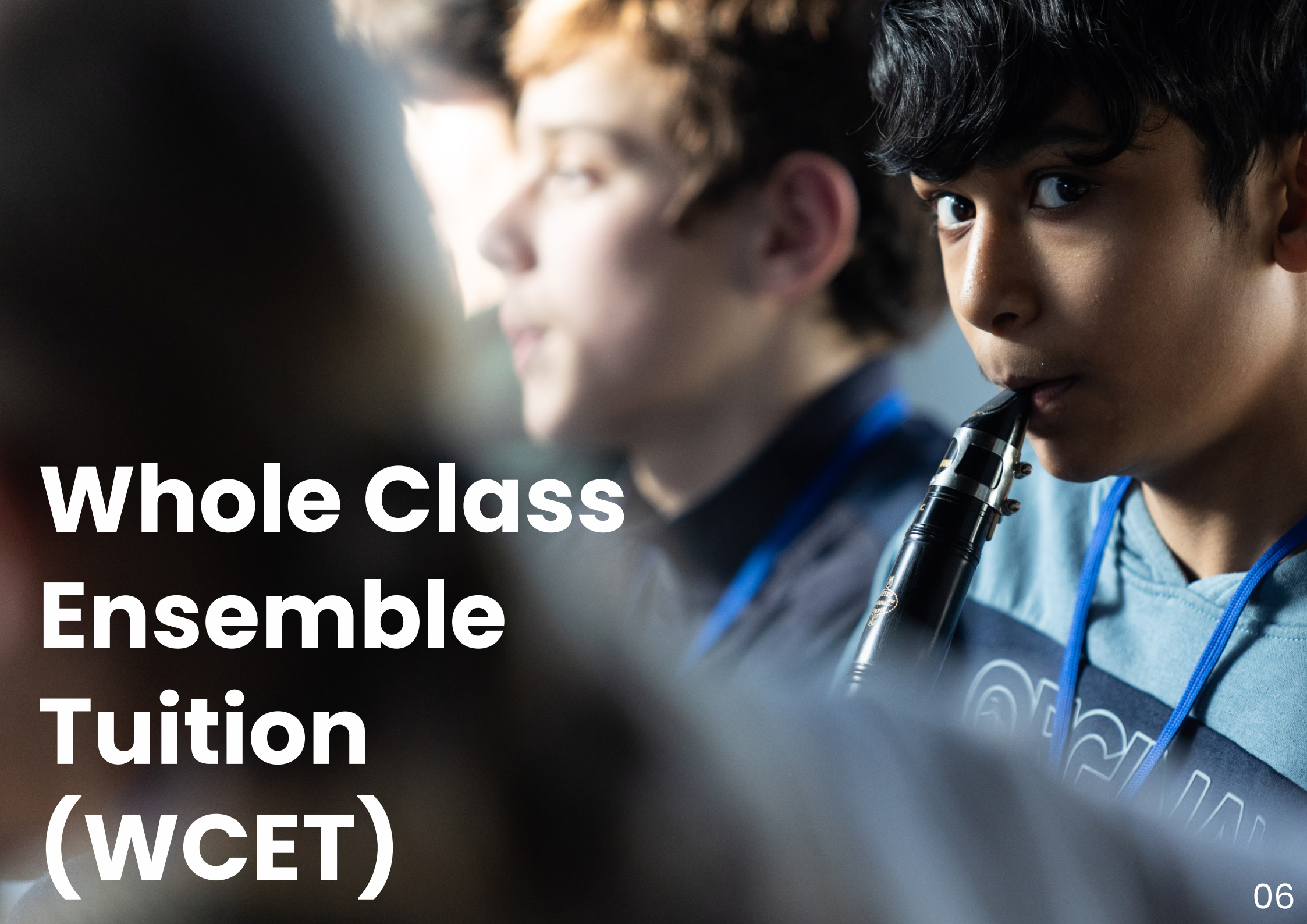
1 class (usually 30 pupils) per lesson

Resources

Tutors will need access to school classroom percussion instruments and a whiteboard for delivering the lessons. Other resources such as a piano/keyboard would be useful.

Please note that tutors will have responsibility for delivering curriculum lessons to classes and keeping assessment records, but not for leading music as a subject area in the school. Time for meetings, concerts and report writing if required will be charged as additional hours agreed with the school. A teacher or TA should be present during delivery.





Whole Class Ensemble Tuition (WCET)

KS1 – KS3

Whole class instrumental programmes have revolutionised access to music education, meaning that all children can experience the joy of learning an instrument alongside their peers and teacher. A flagship part of 2011's National Plan for Music Education, whole class instrumental learning is now a cornerstone of music education across the country and plays a significant role in the new Model Music Curriculum.

Our specialist Music Tutors can deliver programmes suited to the needs of your school and pupils in a way which is fun, engaging and accessible. These programmes can enhance and support your music curriculum and the wider cultural life of your school.

Duration

1 hour (45 minutes delivery + 15 minutes set up prior to the session for tuning and preparation)

Cost

£48.37 per lesson

Hire of a whole class set of recorders = Free

Hire of a whole class set of guitars/ukuleles = £25 per term*

Hire of a whole class set of all other instruments = £55 per term*

*flat charge

Size of group

1 class (usually 30 pupils) per lesson

Type of instrument

Djembe, Guitar, Mixed Brass, Trumpet, Recorder, Samba, Ukulele, Violin, Violin/Cello

Please note all programmes are subject to instrument and tutor availability. For some programmes, Lewisham Music may recommend that schools purchase earplugs for pupils to protect their hearing. A teacher or TA should be present during delivery.

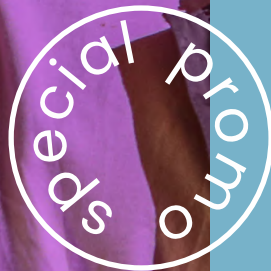


Individual and small group lessons



KS1 – KS5

Individual lessons and lessons for small groups of children learning the same instrument together.



Duration

From 20 to 30 minutes per lesson

Cost

£45.64 per hour

Size of group

Usually 4 students or fewer. For larger groups, please consult with Lewisham Music

Vocal

- Voice (covering a range of styles/traditions)

Instrumental

- Piano/keyboard
- Ukulele
- Guitar (acoustic, electric, bass)
- Percussion (drum kit, djembe, samba)
- Strings (violin, viola, cello, double bass)
- Brass (trumpet, trombone, horn, tuba)
- Woodwind (recorder, flute, clarinet, saxophone, oboe, bassoon)
- Harp
- Accordion

Other specialisms

- Piano/keyboard
- Songwriting
- Rap & Lyricism
- Music Production
- Music Technology (including Accessible Music Technology)

Instruments

All the instruments above can be hired for £20 per term (for guitars), and £23 per term (all other instruments)

To support the uptake of less familiar instruments, subject to availability we will be offering the following instruments on hire for FREE when schools buy in Lewisham Music provision: Double bass, viola, trombone, French horn, bassoon, oboe, accordion.



Ensemble/ choirs/ group music- making

KS1 – KS5

Enrich the musical lives of your pupils and the cultural life of the school through group music activities.

Duration

From 45 to 60 minutes per session

Please note that depending on the size and set up required, extra preparation time (usually 15 mins) may need to be included for ensembles

Cost

£48.37 per hour

Type of instrument

- Instrumental groups - e.g. brass, woodwind, strings or mixed/combination
- Guitar, ukulele or keyboard
- Percussion, Djembe or Samba
- Music technology/music production
- Songwriting
- Rap and lyricism
- Genre-specific - e.g. Rock band, Pop band, Jazz band
- Choirs/vocal ensemble - in a range of formats/styles
- SEND-focused accessible group/Open Orchestra.

A young man with glasses and braids is singing into a microphone. The background is a warm, brownish-orange color. The text 'Rap and Lyricism' is written in white, bold, sans-serif font, curving across the left side of the image. The text 'Songwriting' is written in the same font, curving across the right side of the image.

Rap and Lyricism

Songwriting

Our specialist tutors can explore the artform of rap across a range of sub-genres (Hip-Hop, Grime, Trap and more), as well as linking to creative literacy and personal expression by working on lyricism.

Songwriting can support the creativity and self-expression of individuals or small groups, or work with larger groups, linking to creative literacy and cross-curricular topics.

Cost

- One-off workshops: £51.75 per hour
- Whole class, large groups, ensembles/clubs: £48.37 per hour
- Individual/small groups (usually up to 4 pupils): £45.64 per hour

Music Technology / Production



Music Technology lessons/workshops. These can be focused on music production, or on Assistive Music Technology (e.g. using iPads to make music-making inclusive, especially for those with SEND).

Software/Hardware requirements

We can work with whatever software or hardware the school has. Our specialist Tutors can make use of GarageBand, Logic and other DAWs. We can also utilise free software like SoundTrap and BandLab. In addition, our partnership with Charanga means we can support schools with access to VIP Studio Sessions for KS2 - KS5.

Cost

- One-off workshops: £51.75 per hour
- Whole class, large groups, ensembles/clubs: £48.37 per hour
- Individual/small groups (usually up to 4 pupils): £45.64 per hour





Workshops

KS1 – KS5

One-off workshops that can be tailored to fit with a school's curriculum. Varying from singing workshops to class sessions exploring songwriting, rap and lyricism, or music technology/production.

Cost

£51.75 per hour (minimum 2 hours)

Size of group

Ideal group size will vary depending on the type of workshop. Please consult with Lewisham Music to discuss further.

Type of instrument

- Singing (EYFS-KS5)
- Songwriting (KS2-KS5)
- Rap and Lyricism (KS2-KS5)
- Music Technology/Production (KS2-KS5)

**Specialist
advice,
consultation
/music
audits, CPD
provision
and lesson
observations**





KS1 – KS5

Including music curriculum and extra-curricular music advice and support, training for music specialist and class teachers, singing, music tutor observations.

Cost

£51.75 per hour

We offer limited free 1-hour phone/ in-person consultations to support schools to review and develop their music provision.



Other opportunities in schools and in the community



Saturday Music Centre

Our Saturday Music Centre runs during school term time and offers instrumentalists and singers at all levels (beginner to advanced) a wide range of bands, choirs, groups and ensembles covering a variety of genres, as well as music theory classes and individual instrumental tuition.

Whether you're picking up an instrument for the first time or have been playing for years, our Saturday Music Centre is ideal for children and young people who wish to develop their musical journey in a fun, friendly and supportive environment.

Lewisham Youth Concert Band

Our youth concert band is ideal for children and young people who wish to develop their instrumental skills. The group offers opportunities to play alongside other musicians in a supportive environment and work towards performing in festivals and taking part in exciting projects with our partner organisations. The band currently runs on a Friday evening.

Creative community music programme

Our community music spaces above The Fellowship Inn in Bellingham includes a music technology suite, band rooms and a music hall. Our diverse programme of music connects young people with industry professional musicians and leading creative organisations. Our activities include songwriting, music production, singing, studio sessions, rap and lyricism and much more. We also run a range of holiday courses including Animate Orchestra, Lewisham Junior Orchestra.

Through our space at The Fellowship we are able to provide accessible and affordable creative spaces for Hub partner organisations and local schools. Regular users include Heart n Soul, Fairbeats, as well as a local secondary school and pupil referral unit.



let's make
some
music

Creative Futures

Our exciting creative careers programme is ideal for young adults aged 18 to 30. The programme offers opportunities to kickstart your career in the creative industry. Learn and gain invaluable skills and insights from the industry professionals leading our courses and panel discussions.

Events

Bringing young people together is at the heart of what we do, and our large-scale events give unique opportunities for schools to collaborate and perform together. Regular events include Turning of the Year at Blackheath Halls, Live Unplugged, and SongFest.

We email regularly with information about these opportunities and how to register your interest. Places are usually limited, so it's best to apply as soon as possible.

Hub partnership projects

As the lead partner in Lewisham Music Hub, we utilise our local, regional and national partnerships to offer unique opportunities to our schools. Recent examples have included SEND-focused music placements with Live Music Now; London Symphony Orchestra's 'On Track' programme; and a series of inclusion focused training sessions delivered by Sound Connections.

These partnerships also allow us to bring additional funding and investment into the borough.

Some projects are targeted, and some may be more widely available to schools who want to take up the opportunity. And we are always happy to advise and connect schools with our specialist partner organisations.



Summary of charges

Programme	Cost
Whole Class Ensemble Tuition (WCET); whole class or large groups for instrumental or vocal teaching, Songwriting, Music Technology/Production and Rap and Lyricism	£48.73 per lesson
Individual and group	£45.64 per hour
Ensembles/choirs/group music-making	£48.37 per hour
Workshop	£51.75 per hour (please note that this includes 10% planning and preparation time for the Music Tutor)
Curriculum Lessons for Primary Schools (*NEW OFFER)	

Instrument hire for all Lewisham Music programmes

Guitar hire	£20 per term
All other instruments	£23 per term
Double bass, viola, trombone, French horn, bassoon, oboe, accordion (*SPECIAL OFFER! To support the uptake of less familiar instruments, subject to availability)	Free
Whole class sets of instruments (recorders)	Free
Whole class sets of instruments (ukuleles, guitars)	£25 per term flat charge
Whole class set of instruments (all other instruments)	£55 per term flat charge


Instrument hire for all school-run programmes

Whole class sets of instruments (recorders)	£25 per term flat charge
Whole class sets of instruments (ukuleles, guitars)	£55 per term flat charge
Whole class set of instruments (all other instruments)	£150 per term flat charge

We strongly encourage schools to pick up or return instruments to us at our premises above The Fellowship Inn, SE6 3BT. However, we can offer a delivery-collection service for whole class sets of instruments and for all new programmes. These are subject to a set £40 delivery/collection fee.

Support services for schools and academies

Specialist advice and support for singing, curriculum and extra-curricular music; in-school bespoke staff training; music lesson observations	£51.75 per hour
We offer limited free 1-hour phone/in-person consultations to support schools to review and develop their music provision	Free



Charges /general notes

Whole Class Ensemble Tuition (WCET)

In the National Plan for Music Education it is recommended that this programme should be accessible to pupils for a minimum of one term.

Individual and group lessons

Recommended group size is 4 pupils for primary and 3 pupils for secondary. Larger groups may be set up with the agreement of the Lewisham Music. Group sizes need to be assessed on sound musical and educational grounds and also need to take full account of health and safety issues.

Instrument hire

Instruments may be available for hire for instrumental programmes provided by school based tutors or Music Hub partners subject to availability and agreement with terms and conditions (contact Lewisham Music for details). Please note additional charges may be levied for tuning and maintenance of some types of instrument, and for accessories (e.g. replacement strings, ear plugs etc). Lewisham Music will confirm in advance if such charges may apply.

General notes

Following guidance set out in DCSF Regulation No. 2239, 2007, parents/carers can be charged by schools and academies for all in-school Lewisham Music programmes with the exception of whole class ensemble tuition which is required to take place as a curriculum offer during the normal school day.

Looked After Children should not be charged for individual or group tuition during the school day under guidance set out in DCSF Regulation No. 2239, 2007. Please contact the Lewisham Music office for further information on supporting the costs of lessons for pupils in this category.

Lewisham Music recommends use of Pupil Premium to reduce or remove charges of music lessons for eligible children.

Schools will be charged for damage to instruments beyond normal wear and tear. Lost instruments will be charged at replacement cost.

Why use Lewisham Music



We're a locally-focused charity with a Government remit to support schools with their music offer and to connect young musicians with the opportunities available in their community. You can find out more about us here: www.lewishammusic.org/about-us

We do not make a profit from our services to schools. In fact, everything Lewisham Music offers is subsidised using our funding from Department for Education via Arts Council England.

Our tutors are employed. This means not only are schools and Lewisham Music demonstrating best-practice when it comes to HRMC guidance, legislation related to IR35 and employment law; we are also giving our professional Music Tutors the stability and benefits they deserve.

In addition to paying our Music Tutors, there are many other hidden costs for every hour of tuition which are not fully covered by our charges to schools:

- Advertisement, recruitment, and pre-employment checks.
- Enhanced DBS checks and references.
- Employer on-costs (Teachers' Pension, National Insurance).
- Sick pay, maternity pay and paternity pay.
- Payroll.
- Legal and insurance costs.
- Logistics and administration of programmes.
- An ambitious year-round programme of Continuing Professional Development and training.
- Peer support and advice.
- Quality Assurance and professional development through a programme of observations and mentoring.
- Opportunities for Music Tutors to upskill themselves through partnership projects and qualifications such as the Certificate for Music Educators (CME).



Equity and inclusion

We realise these costs are out of reach for many families in Lewisham. For every 5-18 at school in the borough, we receive around £8.50 per pupil in Government funding per year, which doesn't go very far.

However, we are absolutely committed to working in partnership with schools, funders and other organisations to remove barriers and make music accessible to all. Examples of these efforts include:

- Encouraging schools to use PPG money to subsidise access to low-income families.
- Wide-scale use of small-group learning to make costs more affordable (and many children actually learn better this way!).
- Partnerships with Awards for Young Musician's Furthering Talent programme and London Music Fund, offering completely free tuition to 50 families.
- Large discounts for children and young people from low-income families attending our Saturday Music Centre alongside heavily subsidised and/or fully funded activity through our Fellowship programme.
- Ongoing ambitious fundraising activities to build-up access funds for underprivileged young musicians in the borough.



Useful websites



Click the titles/links to head to the website

Book a programme

www.lewishammusic.org/schools-music

Who we are

www.lewishammusic.org/about-us

Saturday Music Centre

www.lewishammusic.org/saturday-music-centre

Lewisham Youth Concert Band

www.lewishammusic.org/LYCB

Guide to what we offer

www.lewishammusic.org/music-menu

The Fellowship

www.lewishammusic.org/the-fellowship

Our impact

www.lewishammusic.org/impact

The power of music to change lives: a national plan for music education

Model Music Curriculum

Awards for Young Musicians - Furthering Talent

London Music Fund

Open Orchestra

Soundabout

London Symphony Orchestra - On Track

Sound Connections

Trinity Laban Conservatoire of Music & Dance

Youth Music

Contact details

www.lewishammusic.org

@lewishammusic    

schoolprogrammes@lewishammusic.org

First Floor, The Fellowship Inn
Randlesdown Road, Bellingham, SE6 3BT

Registered charity number: 1169721

