

A circular logo with a teal background. The text "Lewisham" is in a bold, sans-serif font, and "music" is in a smaller, lowercase sans-serif font below it.

Lewisham  
music

A photograph of a school band performing on stage. The scene is lit with vibrant purple and blue lights. In the foreground, a girl in a striped sweater plays a ukulele and sings into a microphone. Behind her, another student plays a guitar. To the right, a boy plays an acoustic guitar, and a girl in a grey sweater plays a bass guitar and sings into a microphone. The background is dark, with a spotlight illuminating the performers.

# Programme for schools

2023-2024

**Lewisham Music is an independent charity on a mission to inspire and empower young people across our community through a diverse programme of learning and music-making.**



# Contents

---

Click a page number/title to head straight to the page

- |           |   |           |   |
|-----------|---|-----------|---|
| <b>01</b> | A message from Lewisham Music           | <b>16</b> | Workshops   |
| <b>03</b> | How to book a programme/universal offer | <b>17</b> | Specialist advice, consultation/music audits, CPD provision and lesson observations |
| <b>04</b> | Curriculum Lessons for Primary Schools  | <b>18</b> | Other opportunities in schools and in the community                                 |
| <b>06</b> | Whole Class Ensemble Tuition (WCET)     | <b>21</b> | Summary of charges  |
| <b>09</b> | Individual and small group lessons      | <b>23</b> | Charges/general notes   |
| <b>11</b> | Ensemble/choirs/group music-making      | <b>24</b> | Why use Lewisham Music  |
| <b>13</b> | Rap and lyricism, and songwriting       | <b>26</b> | Equity and inclusion  |
| <b>14</b> | Music Technology/Production             | <b>27</b> | Useful website links and our contact details  |



**A message  
from Lewisham  
Music...**

---

Dear Lewisham schools/academies,

We are delighted to present our school offer for the 2023-2024 academic year. This includes our familiar, long-standing programmes as well as a brand new offer of classroom music curriculum provision ([see page 4](#)). I hope that this is of interest. You can book programmes on the [schools music offer](#) page of our website. If you have any queries, please email [schoolprogrammes@lewishammusic.org](mailto:schoolprogrammes@lewishammusic.org).

In the Spring term, we visited many of you to discuss your music provision and what we can do to help. These supportive visits are offered on an ongoing basis, so please do get in touch if this is of interest. It was brilliant to see the diversity and richness of what is happening in schools. But it has also informed our school support strategy. We are refreshing our CPD and training offer, and creating new ways for schools to learn from and support each other. We are also working on a resource which signposts schools to free or funded opportunities, and funders who will support musical activity in schools.

Lewisham Music is proud that, on a weekly basis, we are delivering significantly more in schools and the community than we were pre-pandemic. In the 2022-2023 academic year we've used our Hub partnerships to bring musical enrichment opportunities to schools across the borough, including a performance of *Before the Firebird* by London Philharmonic Orchestra; chamber concerts celebrating Black composers with Decca ensemble; and Live Music Now residencies in special schools. At our Bellingham HQ above [The Fellowship Inn](#), alongside our after-school and holiday offer we have been piloting skills-based programmes for 16-25 year olds interested in careers in the creative, media or music industries. This has included employing four Young Producers to create and produce a podcast about music and mental health, [Front Line Young Minds](#). We also want to remind you that if schools could make use of our facilities at The Fellowship (band rooms, music studio and large rehearsal room), subject to availability we can offer this for free.

Nationally, a lot is happening. In June 2022 the government published the long anticipated refreshed National Plan for Music Education, [The power of music to change lives](#). Some elements of this plan come into effect from 2023-2024, although our overall

purpose remains the same. As the lead partner in your local Music Hub, Lewisham Music has a remit from the Department for Education to: support and enhance school music; support, train and connect teachers and other music professionals; provide a diverse range of opportunities to young musicians in the community; and work in partnership with other organisations to maximise opportunities and progression routes for young musicians.

Thank you for your time. We look forward to working with you to give Lewisham's young musicians the musical experiences they deserve.

Charly Richardson - Chief Executive

Sarah Plummer - Schools Music Leader



# Our universal offer

---

## All schools and academies have regular access to...

- information about music projects and events led by Lewisham Music and Hub partners
- regular music teacher network meetings
- borough performances such as Lewisham Live and Turning of the Year
- music training for tutors, music leaders, music curriculum teachers and class teachers
- advisory meetings with a Lewisham Music senior manager
- opportunities for pupils to join after school ensembles, Saturday Music Centre and holiday courses (charges apply for parents and carers)
- special projects with partner organisations
- Lewisham Music's monthly Creative Roundup

## How to book

---

If you'd like to book a programme, please click the link below and complete our short online booking form, a member of the team will then be in touch to discuss your requirements.

[www.lewishammusic.org/schools-music](http://www.lewishammusic.org/schools-music)



**new**

# Curriculum Lessons for Primary Schools

---

# EYFS – KS2

**After a positive response from a number of schools when we consulted about whether a Curriculum offer from Lewisham Music would be helpful, we are delighted to be announcing this new offer for the 2023–2024 academic year.**

**These lessons will be delivered by an experienced Lewisham Music Tutor and are designed to cover the National Curriculum for Music and link to the Model Curriculum for Music (2021).**

**The course of lessons will cover the areas of Singing, Listening, Composing and Performing, and are designed to be delivered weekly.**

## **Duration**

This programme can be booked and timetabled to suit the school day and it is recommended that lessons last between 45mins – 60mins. There is a minimum booking requirement of 2 hours.

## **Cost**

£50 per hour (please note that this includes 10% planning and preparation time for the Music Tutor)

## **Size of group**

1 class (usually 30 pupils) per lesson

## **Resources**

Tutors will need access to school classroom percussion instruments and a whiteboard for delivering the lessons. Other resources such as a piano/keyboard would be useful.

**Please note** that tutors will have responsibility for delivering curriculum lessons to classes and keeping assessment records, but not for leading music as a subject area in the school. Time for meetings, concerts and report writing if required will be charged as additional hours agreed with the school.





# Whole Class Ensemble Tuition (WCET)

---

# KS1 – KS3

**Whole class instrumental programmes have revolutionised access to music education, meaning that all children can experience the joy of learning an instrument alongside their peers and teacher. A flagship part of 2011's National Plan for Music Education, whole class instrumental learning is now a cornerstone of music education across the country and plays a significant role in the new Model Music Curriculum.**

**Our specialist Music Tutors can deliver programmes suited to the needs of your school and pupils in a way which is fun, engaging and accessible. These programmes can enhance and support your music curriculum and the wider cultural life of your school.**

## **Duration**

1 hour (45 minutes delivery + 15 minutes set up prior to the session for tuning and preparation)

## **Cost**

£46.73 per lesson

Hire of a whole class set of recorders, guitars or ukuleles = free

Hire of a whole class set of all other instruments = £50 per term

## **Size of group**

1 class (usually 30 pupils) per lesson

## **Type of instrument**

Djembe, Guitar, Mixed Brass, Trumpet, Recorder, Samba, Ukulele, Violin, Violin/Cello

**Please note** all programmes are subject to instrument and tutor availability. For some programmes, Lewisham Music may recommend that schools purchase earplugs for pupils to protect their hearing.



**Music helps with my memory. In Djembe we do a lot of signals where the teacher plays a simple signal, then shows us the pattern that we have to respond to. Once you hear it, you have to remember what your response to the signal is. I think it's good for your brain.**

Young musician, 10 – Rathfern Primary School





**Individual and  
small group  
lessons**

---

# KS1 – KS5

**Individual lessons and lessons for small groups of children learning the same instrument together.**

## **Duration**

From 20 to 30 minutes per lesson

## **Cost**

£44.10 per hour

## **Size of group**

Usually 4 students or fewer. For larger groups, please consult with Lewisham Music

## **Type of offer...**

### **Vocal**

- Voice (covering a range of styles/tradition)

### **Instrumental**

- Piano/keyboard
- Ukulele
- Guitar (acoustic, electric, bass)
- Percussion (drum kit, djembe, samba)
- Strings (violin, viola, cello, double bass)
- Brass (trumpet, trombone, horn, tuba)
- Woodwind (recorder, flute, clarinet, saxophone, oboe, bassoon)
- Harp
- Accordion

### **Other specialisms**

- Piano/keyboard
- Songwriting
- Rap & Lyricism
- Music Production
- Music Technology (including Accessible Music Technology)

### **Instruments**

All the instruments above can be hired for £20 per term (for guitars), and £23 per term (all other instruments.)

**To support the uptake of less familiar instruments, subject to availability we will be offering the following instruments on hire for FREE when schools buy in Lewisham Music provision:**

**Double bass, viola, trombone, horn, bassoon, oboe, accordion.**





# Ensemble/ choirs/ group music- making

## KS1 – KS5

**Enrich the musical lives of your pupils and the cultural life of the school through group music activities.**

**Duration**

From 45 to 60 minutes per session

**Please note** that depending on the size and set up required, extra preparation time (usually 15 mins) may need to be included for ensembles

**Cost**

£46.73 per hour

**Type of instrument**

- Instrumental groups - e.g. brass, woodwind, strings or mixed/combination
- Guitar, ukulele or keyboard
- Percussion, Djembe or Samba
- Music technology/music production
- Songwriting
- Rap and lyricism
- Genre-specific - e.g. Rock band, Pop band, Jazz band
- Choirs/vocal ensemble - in a range of formats/styles
- SEND-focused accessible group/Open Orchestras.



**I think music helps in other parts of school learning. It helps you listen better because if you're learning different patterns and you have to be able to figure out the difference between different notes, it helps you to focus. So it helps in school a lot.**

Young musician, 9 – Rathfern Primary School



# Rap and Lyricism

---

# Songwriting

---



**Our specialist tutors can explore the artform of rap across a range of sub-genres (Hip-Hop, Grime, Trap and more), as well as linking to creative literacy and personal expression by working on lyricism.**

**Songwriting can support the creativity and self-expression of individuals or small groups, or work with larger groups, linking to creative literacy and cross-curricular topics.**

#### **Cost**

- One-off workshops: £50 per hour
- Whole class, large groups, ensembles/clubs: £46.73 per hour
- Individual/small groups (usually up to 4 pupils): £44.10 per hour



# Music Technology/ Production



**Music Technology lessons/workshops. These can be focused on music production, or on Assistive Music Technology (e.g. using iPads to make music-making inclusive, especially for those with SEND).**

## **Software/Hardware requirements**

We can work with whatever software or hardware the school has. Our specialist Tutors can make use of GarageBand, Logic and other DAWs. We can also utilise free software like SoundTrap and BandLab. In addition, our partnership with Charanga means we can support schools with access to VIP Studio Sessions for KS2 - KS5.

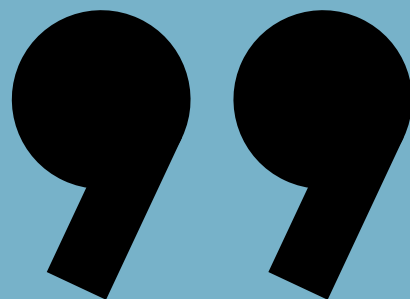
## **Cost**

- One-off workshops: £50 per hour
- Whole class, large groups, ensembles/clubs: £46.73 per hour
- Individual/small groups (usually up to 4 pupils): £44.10 per hour



**Music's made me more confident 'cause I've always had talent, but I never really showcased it. And when I did, I got praise from it, which has made me become more willing to show everyone what I can actually do, and made me realise, rah, I am talented, I can make others happy with my lyrics and make them more aware of issues basically.**

Young artist, 15 – New Levels project



# Workshops

---



## KS1 – KS5

**One-off workshops that can be tailored to fit with a school's curriculum. Varying from singing workshops to class sessions exploring songwriting, rap and lyricism, or music technology/production.**

### **Cost**

£50 per hour (minimum 2 hours)

### **Size of group**

Ideal group size will vary depending on the type of workshop. Please consult with Lewisham Music to discuss further.

### **Type of instrument**

- Singing (EYFS-KS5)
- Songwriting (KS2-KS5)
- Rap and Lyricism (KS2-KS5)
- Music Technology/Production (KS2-KS5)



**Specialist  
advice,  
consultation/  
music audits,  
CPD provision  
and lesson  
observations**

---

**KS1 – KS5**

**Including music curriculum and extra-curricular music advice and support, training for music specialist and class teachers, singing, music tutor observations.**

**Cost**

£50 per hour

We offer limited free 1-hour phone/ in-person consultations to support schools to review and develop their music provision.



**Other  
opportunities  
in schools and  
in the community**

---

## Saturday Music Centre

Our Saturday Music Centre runs during school term time and offers instrumentalists and singers at all levels (beginner to advanced) a wide range of bands, choirs, groups and ensembles covering a variety of genres, as well as music theory classes and individual instrumental tuition.

Whether you're picking up an instrument for the first time or have been playing for years, our Saturday Music Centre is ideal for children and young people who wish to develop their musical journey in a fun, friendly and supportive environment.

## Lewisham Youth Concert Band

Our youth concert band is ideal for children and young people who wish to develop their instrumental skills. The group offers opportunities to play alongside other musicians in a supportive environment and work towards performing in festivals and taking part in exciting projects with our partner organisations. The band currently runs on a Friday evening.

## Lewisham Music @ The Fellowship

Lewisham Music is excited to announce the launch of our new music programme. Our new venue above The Fellowship Inn in Bellingham includes a state-of-the-art music technology suite, band rooms and a music hall. Our diverse programme of music connects young people with industry professional musicians and leading creative organisations. Our activities include songwriting, music production, singing, Animate Orchestra, Lewisham Junior Orchestra, studio sessions, rap and lyricism and much more.

Through our space at The Fellowship we are able to provide accessible and affordable creative spaces for Hub partner organisations and local schools. Regular users include Heart n Soul, Fairbeats, as well as a local secondary school and pupil referral unit.

## Events

Bringing young people together is at the heart of what we do, and our large-scale events give unique opportunities for schools to collaborate and perform together. Regular events include Turning of the Year at Blackheath Halls, Live UnPlugged, and SongFest.

We email regularly with information about these opportunities and how to register your interest. Places are usually limited, so it's best to apply as soon as possible.

## Hub partnership projects

As the lead partner in Lewisham Music Hub, we utilise our local, regional and national partnerships to offer unique opportunities to our schools. Recent examples have included SEND-focused music placements in primary and special schools with Soundabout; London Symphony Orchestra's 'On Track' programme; a series of inclusion-focused training sessions delivered by Sound Connections; chamber concerts delivered by Decca Ensemble to celebrate Black composers as part of Black History Month, and a performance of 'Before The Firebird' by London Philharmonic Orchestra..

These partnerships also allow us to bring additional funding and investment into the borough.

Some projects are targeted, and some may be more widely available to schools who want to take up the opportunity. And we are always happy to advise and connect schools with specialist partners organisations.





**My daughter was singing with Dalmain choir and she was almost too nervous to come. She is autistic and very full of worry and low self-esteem at the moment. To see her singing her heart out, and so happy, meant the world to me. ‘I can’t stop smiling mum’ she said afterwards.**

Happy parent - Turning of the Year concert





# Summary of charges

---



<b>Programme</b>	<b>Cost</b>
Whole Class Ensemble Tuition (WCET); whole class or large groups for instrumental or vocal teaching, Songwriting, Music Technology/ Production and Rap and Lyricism	£46.73 per lesson
Individual and group	£44.10 per hour
Ensembles/choirs/group music-making	£46.73 per hour
Workshop	£50 per hour (please note that this includes 10% planning and preparation time for the Music Tutor)
Curriculum Lessons for Primary Schools (*NEW OFFER)	

## **Instrument hire for all Lewisham Music programmes**

Guitar hire	£20 per term
All other instruments	£23 per term
Whole class sets of instruments (ukuleles, guitars, and recorders)	FREE
Whole class set of instruments (all other instruments)	£50 per term flat charge

## **Instrument hire for all school-run programmes**

Whole class sets of instruments (recorders)	£25 per term flat charge
Whole class sets of instruments (ukuleles, guitars)	£50 per term flat charge
Whole class set of instruments (all other instruments)	£150 per term flat charge

We strongly encourage schools to pick up or return instruments to us at our premises above The Fellowship Inn, SE6 3BT. However, we can offer a delivery-collection service for whole class sets of instruments and for all new programmes. These are subject to a set £40 delivery/collection fee.

## **Support services for schools and academies**

Specialist advice and support for singing, curriculum and extra-curricular music; in-school bespoke staff training; music lesson observations	£50 per hour
We offer limited free 1-hour phone/in-person consultations to support schools to review and develop their music provision	FREE

# Charges/ general notes

---

## **Whole Class Ensemble Tuition (WCET)**

In the National Plan for Music Education it is recommended that this programme should be accessible to pupils for a minimum of one term.

## **Individual and group lessons**

Recommended group size is 4 pupils for primary and 3 pupils for secondary. Larger groups may be set up with the agreement of the Lewisham Music. Group sizes need to be assessed on sound musical and educational grounds and also need to take full account of health and safety issues.

## **Instrument hire**

Instruments may be available for hire for instrumental programmes provided by school based tutors or Music Hub partners subject to availability and agreement with terms and conditions (contact Lewisham Music for details).

Please note additional charges may be levied for tuning and maintenance of some types of instrument, and for accessories (e.g. replacement strings, ear plugs etc). Lewisham Music will confirm in advance if such charges may apply.

## **General notes**

Following guidance set out in DCSF Regulation No. 2239, 2007, parents/carers can be charged by schools and academies for all in-school Lewisham Music programmes with the exception of whole class ensemble tuition which is required to take place as a curriculum offer during the normal school day.

Looked After Children should not be charged for individual or group tuition during the school day under guidance set out in DCSF Regulation No. 2239, 2007. Please contact the Lewisham Music office for further information on supporting the costs of lessons for pupils in this category.

**Lewisham Music recommends use of Pupil Premium to reduce or remove charges of music lessons for eligible children.**

Schools will be charged for damage to instruments beyond normal wear and tear. Lost instruments will be charged at replacement cost.

# Why use Lewisham Music

---



We're a locally-focused charity with a Government remit to support schools with their music offer and to connect young musicians with the opportunities available in their community. You can find out more about us here: [www.lewishammusic.org/about-us](http://www.lewishammusic.org/about-us)

We do not make a profit from our services to schools. In fact, everything Lewisham Music offers is subsidised using our funding from Department for Education via Arts Council England.

Our tutors are employed. This means not only are schools and Lewisham Music demonstrating best-practice when it comes to HRMC guidance, legislation related to IR35 and employment law; we are also giving our professional Music Tutors the stability and benefits they deserve.

In addition to paying our Music Tutors, there are many other hidden costs for every hour of tuition which are not fully covered by our charges to schools:

- Advertisement, recruitment, and pre-employment checks.
- Enhanced DBS checks and references.
- Employer on-costs (Teachers' Pension, National Insurance).
- Sick pay, maternity pay and paternity pay.
- Payroll.
- Legal and insurance costs.
- Logistics and administration of programmes.
- An ambitious year-round programme of Continuing Professional Development and training.
- Peer support and advice.
- Quality Assurance and professional development through a programme of observations and mentoring.
- Opportunities for Music Tutors to upskill themselves through partnership projects and qualifications such as the Certificate for Music Educators (CME).



**This project gave me a chance to see music differently. To make music with other people that I wouldn't normally collab with. Having the chance to record in the studio was nice and what we made in such a short time felt great.**

Young musician, 14 - Fellowship Music Collective project



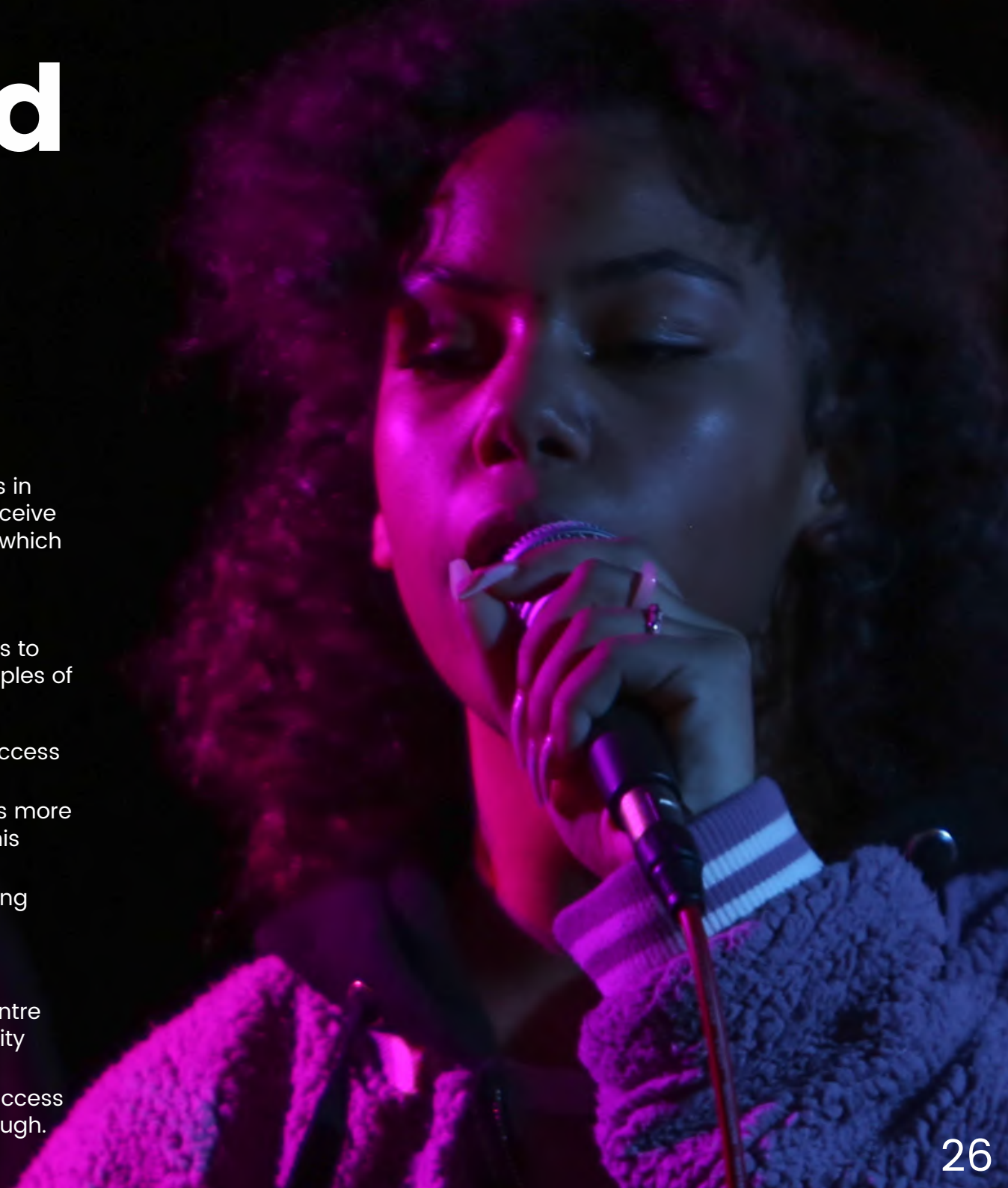
# Equity and inclusion

---

We realise these costs are out of reach for many families in Lewisham. For every 5-18 at school in the borough, we receive around £8.50 per pupil in Government funding per year, which doesn't go very far.

However, we are absolutely committed to working in partnership with schools, funders and other organisations to remove barriers and make music accessible to all. Examples of these efforts include:

- Encouraging schools to use PPG money to subsidise access to low-income families.
- Wide-scale use of small-group learning to make costs more affordable (and many children actually learn better this way!).
- Partnerships with [Awards for Young Musician's](#) Furthering Talent programme and [London Music Fund](#), offering completely free tuition to 40 families.
- Large discounts for children and young people from low-income families attending our Saturday Music Centre alongside heavily subsidised and/or fully funded activity through our Fellowship programme.
- Ongoing ambitious fundraising activities to build-up access funds for underprivileged young musicians in the borough.



# Useful website links

---

Click the titles/links  
below to head to the  
relevant website

## **Book a programme**

[www.lewishammusic.org/schools-music](http://www.lewishammusic.org/schools-music)

## **Who we are**

[www.lewishammusic.org/about-us](http://www.lewishammusic.org/about-us)

## **Saturday Music Centre**

[www.lewishammusic.org/saturday-music-centre](http://www.lewishammusic.org/saturday-music-centre)

## **Lewisham Youth Concert Band**

[www.lewishammusic.org/LYCB](http://www.lewishammusic.org/LYCB)

## **The Fellowship**

[www.lewishammusic.org/the-fellowship](http://www.lewishammusic.org/the-fellowship)

## **Our impact**

[www.lewishammusic.org/impact](http://www.lewishammusic.org/impact)

**The power of music to change Lives: a national plan for music education**

**Model Music Curriculum**

**Awards for Young Musicians - Furthering Talent**

**London Music Fund**

**Open Orchestras**

**Soundabout**

**London Symphony Orchestra - On Track**

**Sound Connections**

**Trinity Laban Conservatoire of Music & Dance**

# Contact details

---

[www.lewishammusic.org](http://www.lewishammusic.org)



[schoolprogrammes@lewishammusic.org](mailto:schoolprogrammes@lewishammusic.org)

First Floor, The Fellowship Inn  
Randlesdown Road, Bellingham, SE6 3BT

@LewishamMusic    

Registered charity number: 1169721